

Energy management made simple.



With the new e-Stat, multiple location energy management couldn't be easier.

- > Wires and operates like a traditional thermostat. Installed by any HVAC vendor.
- > Receives time and temperature programs from your computer via your wide area network or third party network.
- > Reports back system temperatures and equipment status for simple, remote troubleshooting.
- > Easy to use Internet based control of 100 thermostats or 10,000. No special training needed.

e-stat



LIGHTSTAT®
Energy Management Systems

The all new e-Stat gives you real control in real time.

- Add value to your existing communications network by managing your energy usage remotely.
- Easily identify and troubleshoot problems with your HVAC system, avoiding unnecessary on site visits.
- Keep network traffic low with "On-Demand" communications for normal operational information.
- Receive immediate notification of problems with customized alerts.
- Customizable, user-friendly web interface for programming and monitoring.



BACKLIT DISPLAY
shows room temperature, heating and cooling set points, and HVAC equipment status.

BUTTONS CUSTOMIZED
for remote or local functionality.

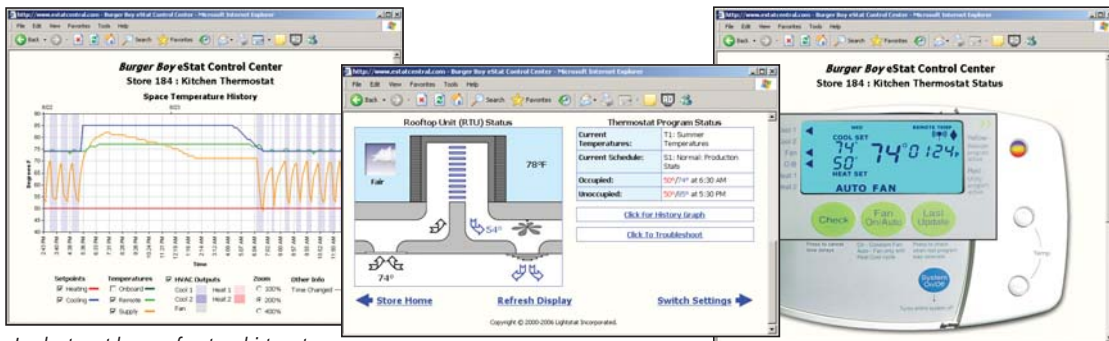
PLUG-N-PLAY
Simple connection to your existing communication network.



SETUP DIAGNOSTICS
include indicating lights and simple text messages, providing program and transmission status for easy operation by untrained personnel.

PUSH BUTTONS
allow for local temperature adjustments within an owner specified range, or no adjustment at all.

Real time reporting from multiple locations puts you in control of energy usage from your PC.



Look at past hours of system history to verify efficient operation.

Easy to read HVAC status at a glance.

You see what your employee sees with an on-line virtual stat.

